

BASSALTA

ECO Sky  
Retail • Office • Residence

# BASALTA

---

Even as this tower reaches for the sky, its name is firmly grounded in the earth. Basalta is the name given to fine-grained black volcanic rock. The name was inspired by the striking black sculptures in the lobby.

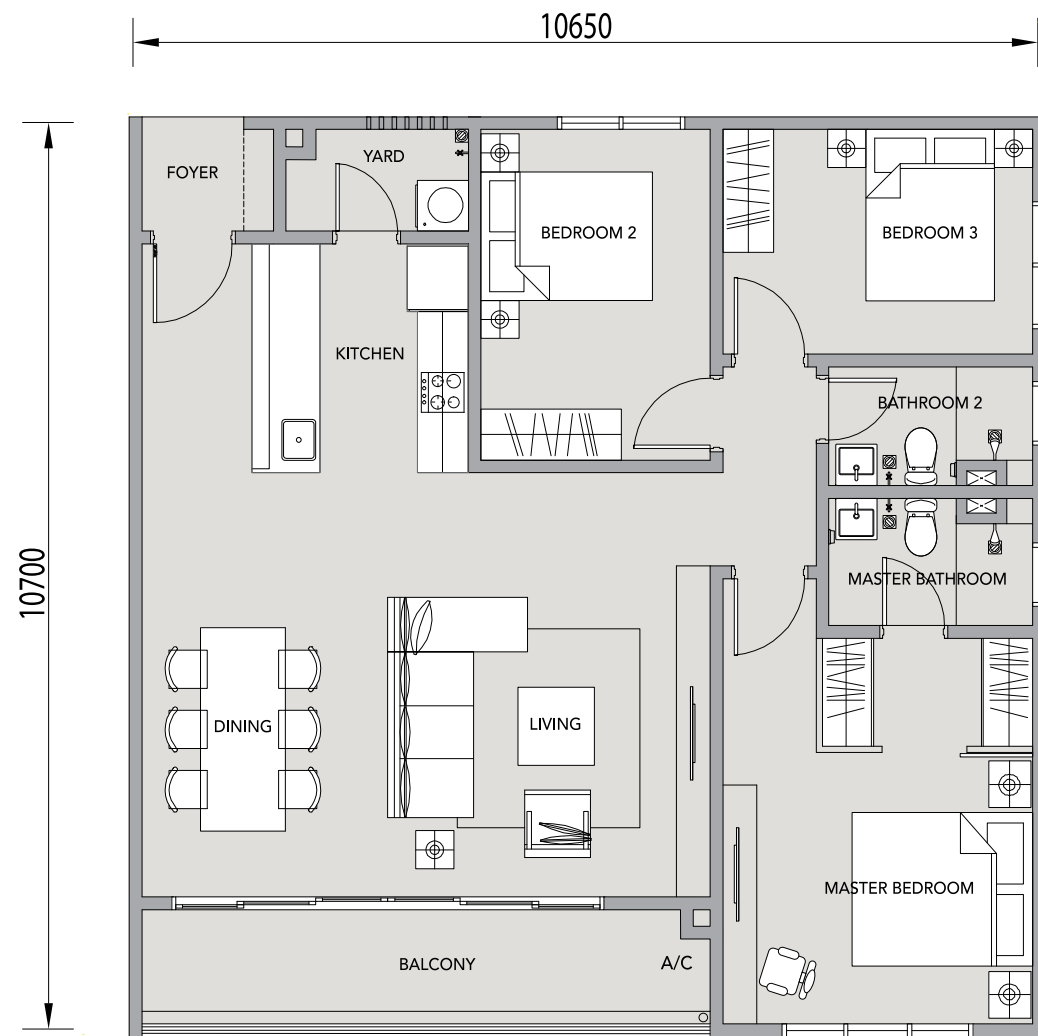
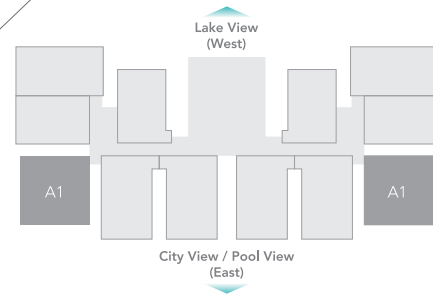
# TYPICAL LEVEL PLAN



# FLOOR PLAN

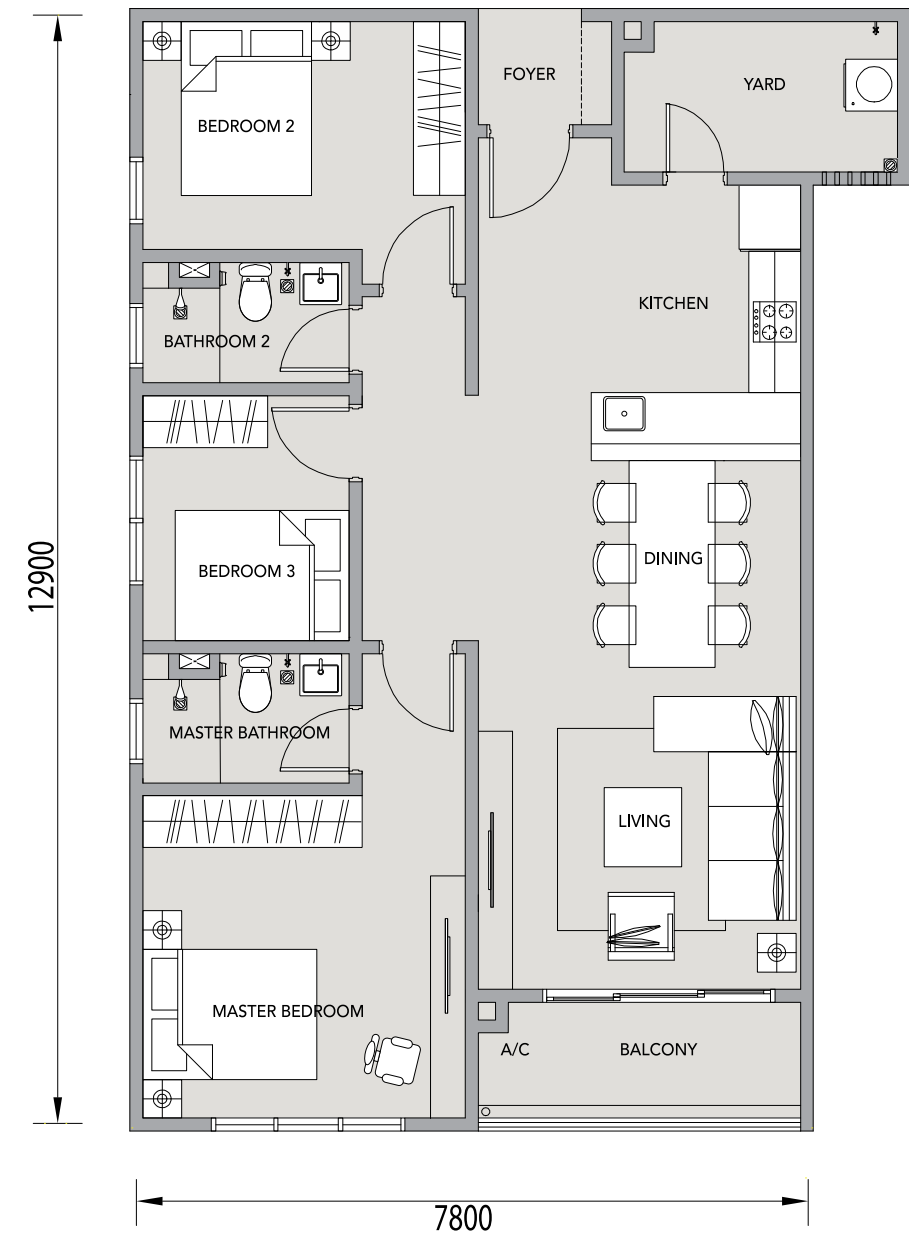
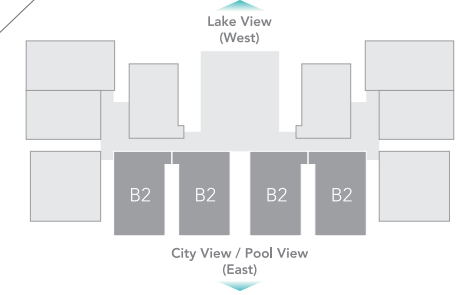
# TYPE A1

1,227 sqft  
3 beds + 2 baths



# TYPE B2

1,109 sqft  
3 beds + 2 baths

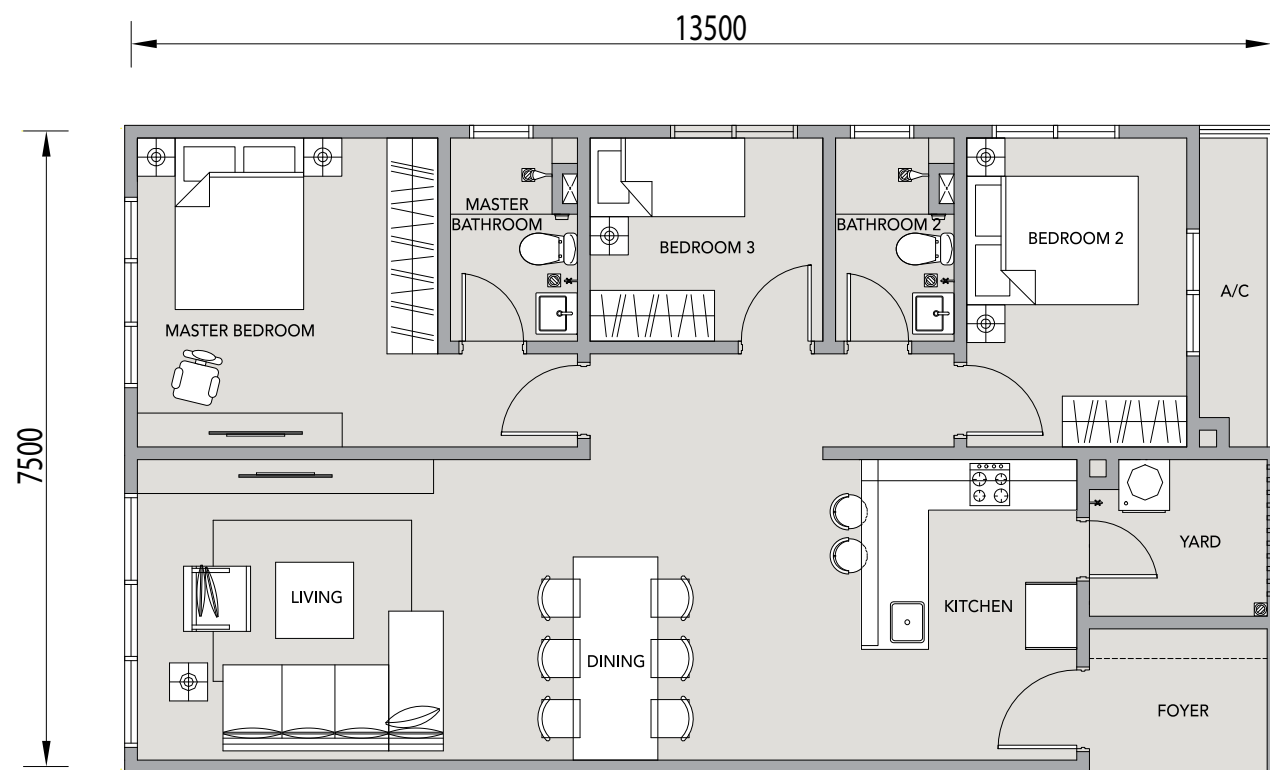
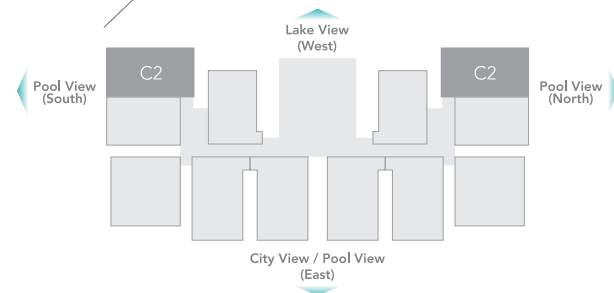




The open-plan living, dining and dry kitchen areas makes the space so expansive and yet everything is within reach

# TYPE C2

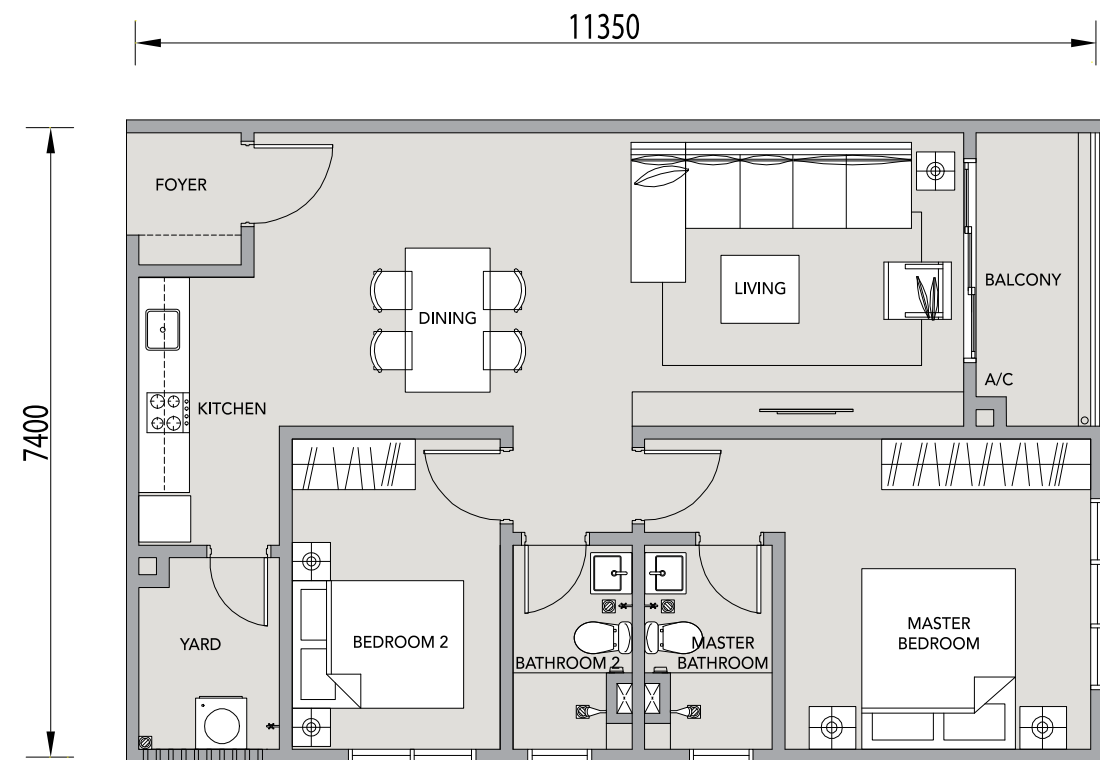
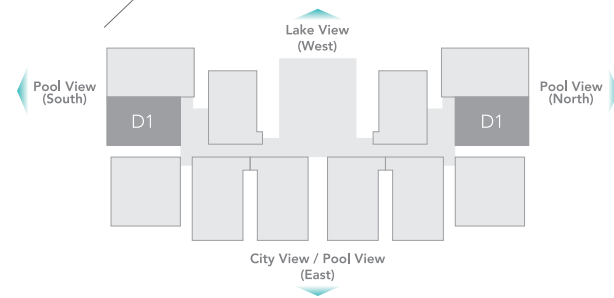
1,055 sqft  
3 beds + 2 baths



The spacious master bedroom with en suite bathroom is tucked away to ensure your privacy

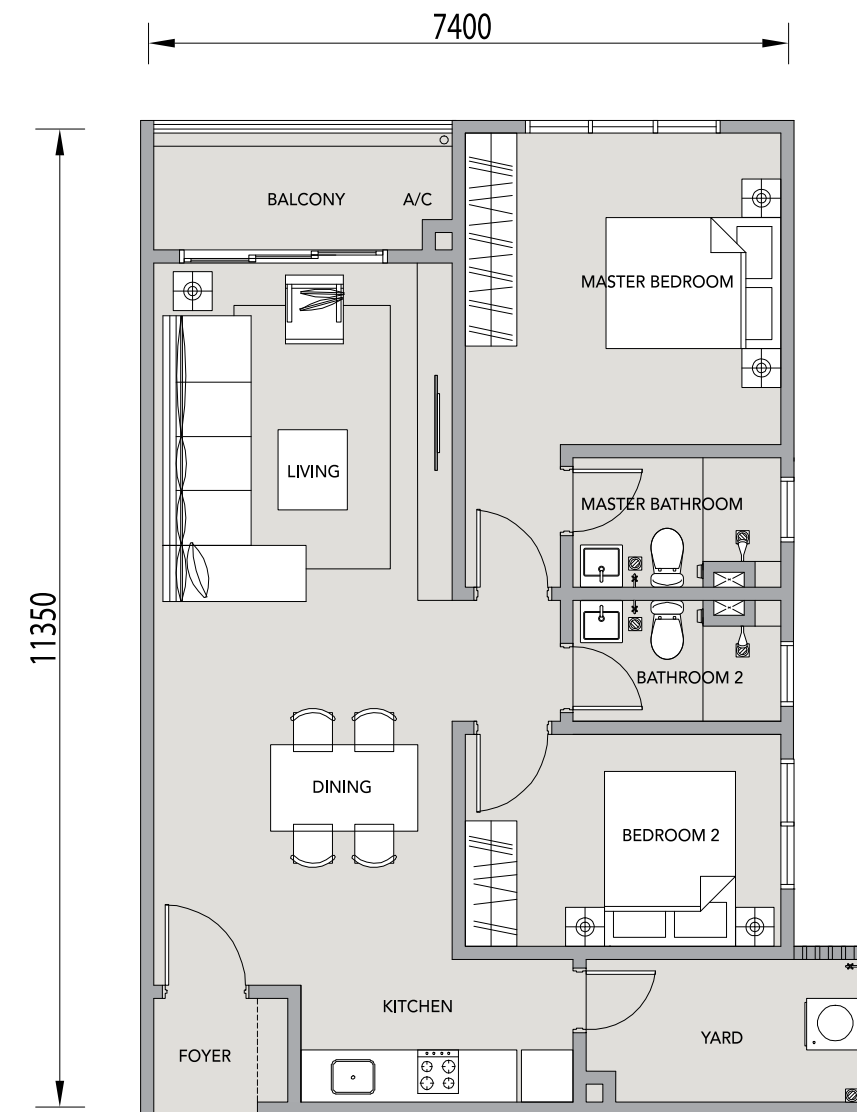
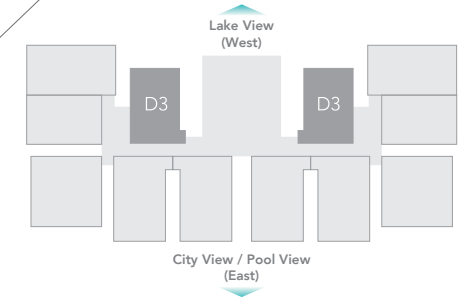
# TYPE D1

904 sqft  
2 beds + 2 baths



# TYPE D3

926 sqft  
2 beds + 2 baths





The quality build and finish offers the perfect canvas to design the perfect setting for your lifestyle

# SPECIFICATIONS

<b>Structure</b>	Reinforced concrete				
<b>Wall</b>	Brick wall / Reinforced concrete wall / Solid dry wall (where applicable)				
<b>Roofing</b>	Reinforced concrete roof				
<b>Ceiling</b>	Toilet	: Ceiling board			
	Others	: Skim coat & paint / ceiling board (whichever applicable)			
<b>Window</b>	Aluminum framed glass window				
<b>Door</b>	Foyer	: Iron grille			
	Main Entrance	: Fire rated door			
	Others	: Plywood flush door / Aluminium framed glass sliding door (where applicable)			
<b>Ironmongery</b>	Quality lockset				
<b>Floor Finish</b>	Foyer / Living / Dining / Kitchen	: Porcelain tiles			
	Master Bedroom / Other Bedrooms	: Laminated timber floor			
	Master Bathroom / Bathroom 2	: Homogeneous tiles			
	Balcony / Yard	: Homogeneous tiles			
	A/C Ledge	: Cement render			
<b>Wall Finish</b>	Master Bathroom / Bathroom 2	: Ceramic tiles up to ceiling height			
	Other areas	: Skim coat / Plaster & paint (where applicable)			
<b>Sanitary Ware &amp; Fitting</b>					
Unit Type	A1, B2, C2, D1 & D3				
Water Closet	2				
Basin	2				
Shower Rose	2				
Kitchen Sink	1				
<b>Electrical Installation</b>					
	Typical Unit Type				
	A1	B2	C2	D1	D3
Lighting Point	13	13	12	12	11
Fan Point	5	5	5	4	4
13amp Plug Point	21	21	21	19	19
Air Conditioning Point	4	4	4	3	3
Water Heater Point	2	2	2	2	2
Telephone Point	2	2	2	2	2
Data Point	2	2	2	2	2
SMATV Point	2	2	2	2	2
Electrical Distribution Board	1	1	1	1	1
Door Bell Point	1	1	1	1	1
Audio Intercom Handset	1	1	1	1	1

A Prestigious Development By  
**ECOWORLD**  
CREATING TOMORROW & BEYOND

# TRACING

Eco Sky Development Sdn. Bhd. (1001417-M)  
Eco Sky Sdn. Bhd. (formerly known as Crystal Cypress Sdn. Bhd.) (1079085-X)

EcoWorld Gallery @ EcoSky  
Lot 3972 & 4189, Batu 6 ½, Jalan Sultan Azlan Shah, 68100 Kuala Lumpur, Malaysia.  
F +603 6251 2552    GPS Coordinates +3° 13' 8.77", +101° 40' 15.32"

Enjoy our first-class services and expert assistant every day.  
Mondays to Fridays: 9am - 6pm  
Weekends and Public Holidays: 10am - 6pm

**+603 6251 2255**  
[www.ecoworld.my](http://www.ecoworld.my)

Developer: Eco Sky Development Sdn. Bhd. (1001417-M) • Developer's License: 13307-1/12-2016/02535(L) • Validity Period: 20/12/2015 - 19/12/2016 • Advertising & Sales Permit: 13307-1/12-2016/02535(P) • Validity Period: 20/12/2015 - 19/12/2016 • Land Tenure: Freehold • Approving Local Authority: Dewan Bandaraya Kuala Lumpur • Building Plan Ref. No: BP U1 OSC 2013 2559 • Expected Date of Completion: Dec 2017 • Land Encumbrances: United Overseas Bank (M) Bhd • Restriction In Interest: Nil • Type of Property: Service Apartment • Size: 904 sq. ft. to 1227 sq. ft. • Total Units: 357 units • Selling Price: RM629,200 (Min) - RM946,000 (Max) • Bumiputera Discount: 5% • All art renderings and photographs contained in this circular are artist's impressions only. The Developer reserves the right to modify any part or parts of the building prior to completion as directed or approved by the architects and/or the relevant authorities. All plans, layouts, information and specifications are subject to change and cannot form part of an offer or contract presentation.