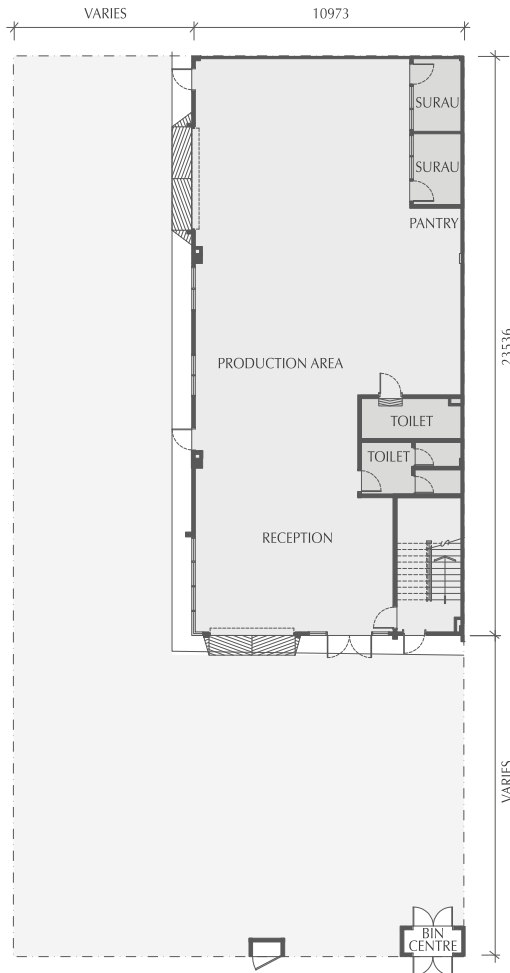


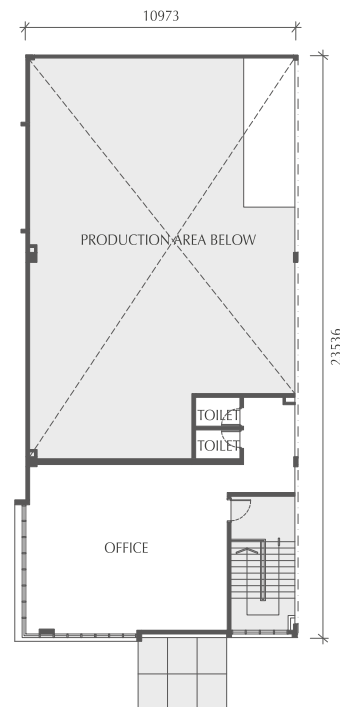
CLUSTER FACTORY

60' x 120'

BUILT-UP 3,921 SQ.FT.



GROUND FLOOR



FIRST FLOOR

SPECIFICATIONS

CLUSTER FACTORY | 60'x120'

Structure	Reinforced concrete / Steel frame / Steel trusses
Wall	Brick wall
Roof	Mainly metal deck roofing with suitable sisalation Reinforced concrete flat roof
Ceiling	Plaster ceiling for office, where indicated
Windows	Mainly aluminium-framed openable & fixed windows
Doors	Metal roller shutter for service entrance, Aluminium framed glass door, Plywood flush door, Fire-rated door, Metal door with quality lock
Wall Finishes and Painting	Weather shield paint or approved equivalent externally Emulsion paint internally, Semi-gloss paint to wood and metal surfaces
Floor Finishes	Tile finish for toilet & bin centre Cement rendering for others
Sanitary and Water Supply Installation	Quality sanitary ware with fitting
Electrical Installation	Three phase (setting at 150 Amp) 415-volt electricity supply Terminating at the main switchboard
Gate and Fencing	Mild steel gate Brick wall Bin centre BSP fencing